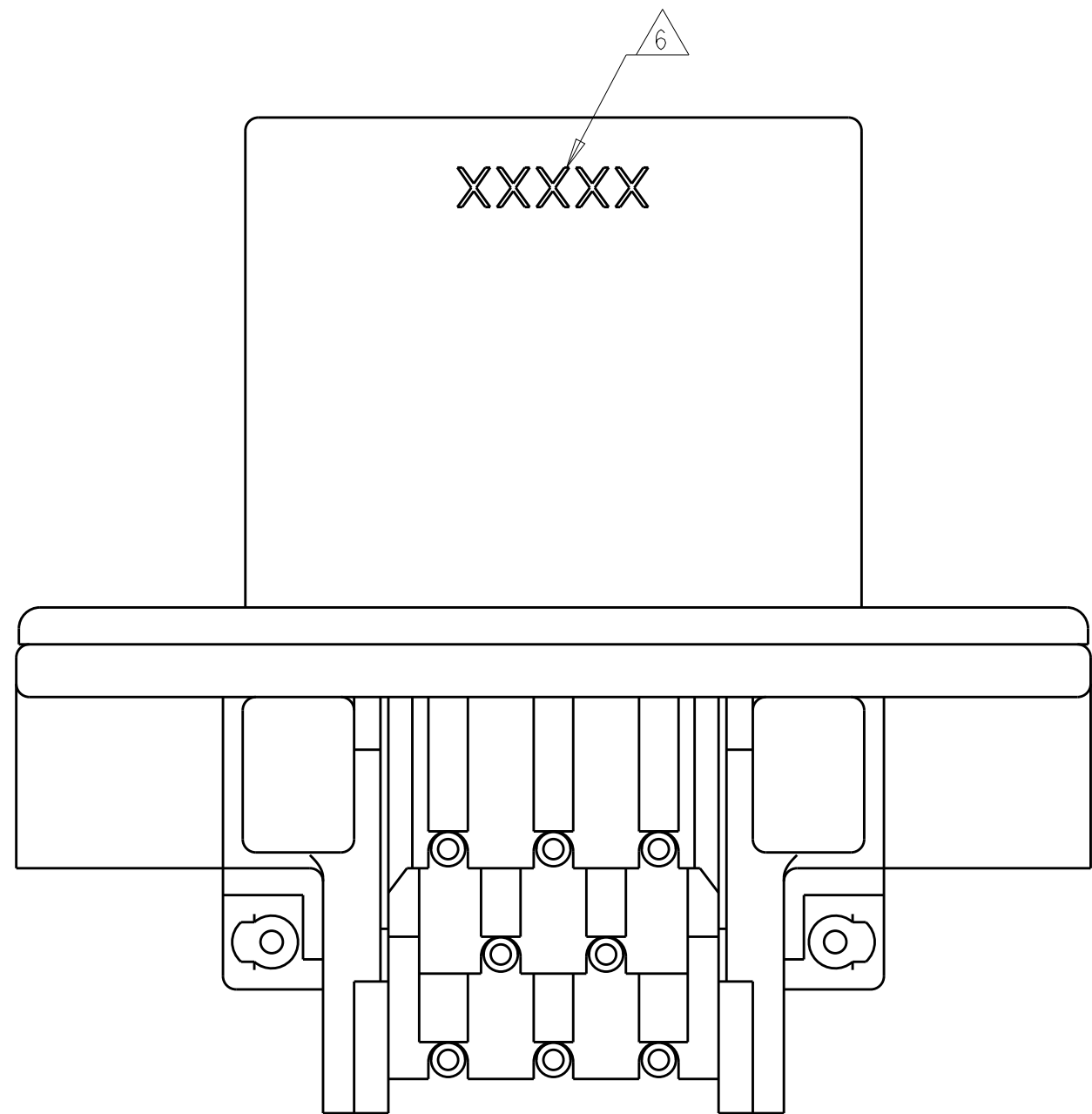


SECTION B-B



REVISIONS					
P	LTR	DESCRIPTION	DATE	DWN	APVD
F5		REVISED PER ECO-13-020268	31DEC2013	DLD	DCS
F6		REVISED PER ECO-14-019367	20JAN2015	DD	DS
F7		REVISED PER ECO-15-003872	25MAR2015	DD	DS
F8		REVISED PER ECO-16-003526	09MAR2016	JM	DS

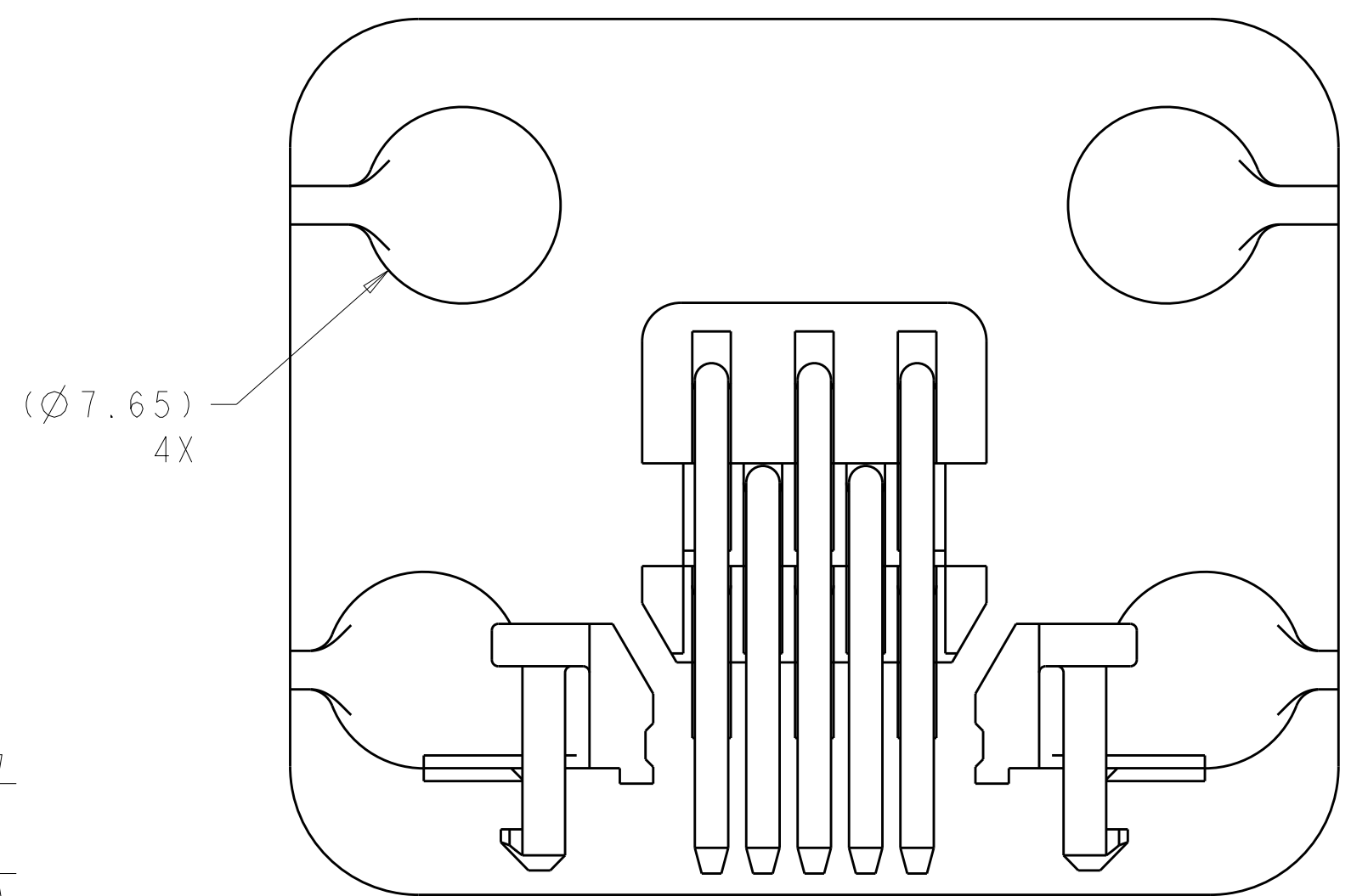
- △ ACCEPTS #3 SELF TAPPING THREAD FORMING SCREWS OR METRIC EQUIVALENT. DRIVE TO 0.6-0.8 N-m.
- △ HOUSING COLORS ARE MECHANICALLY KEYED TO MATE ONLY WITH IDENTICALLY COLORED PLUG ASSEMBLIES.
- △ REFER TO PAGE 2 FOR 776280-6 ASSEMBLY DIMENSIONS, RECOMMENDED MOUNTING HOLE AND P.C. BOARD LAYOUT ARE THE SAME FOR ALL DASH NUMBERS.
4. HEADER MATES TO PLUG ASSEMBLY 776286 WHICH USES REELED TERMINALS 770520 AND LOOSE PIECE TERMINALS 770854.
- △ MATERIALS: GASKET - SILICONE
HEADER HOUSING - GLASS FILLED PBT
PINS - TIN OR GOLD PLATED BRASS
- △ DATE CODE TO BE BRANDED IN THIS LOCATION PER TE SPEC 102-60. USE 5 DIGIT CODE: FIRST 2 DIGITS = YEAR, SECOND 2 DIGITS = WEEK, LAST DIGIT = DAY

NATURAL	DURAGOLD PLATED	1-776280-2
BLACK	DURAGOLD PLATED	1-776280-1
BLACK	TIN PLATED	△ 776280-6
NATURAL	TIN PLATED	776280-2
BLACK	TIN PLATED	776280-1
HEADER HOUSING COLOR	PIN	PART NUMBER

THIS DRAWING IS A CONTROLLED DOCUMENT.		DWN J. MARKEY 29FEB08	TE Connectivity	
		CHK J. MARKEY 29FEB08		
DIMENSIONS:		APVD J. MARKEY 29FEB08	NAME	
mm		PRODUCT SPEC		
	0 PLC	±	SIZE CAGE CODE DRAWING NO	
	1 PLC	±0.2		
	2 PLC	±0.13	RESTRICTED TO	
	3 PLC	±		
	4 PLC	±	A100779C=776280	
	ANGLES	±°		
MATERIAL	FINISH	WEIGHT	CUSTOMER DRAWING	
△ 5	△ 3	-	SCALE 4:1 SHEET 1 OF 3 REV F8	

Technical drawing of a square connector plate. The drawing includes the following dimensions and labels:

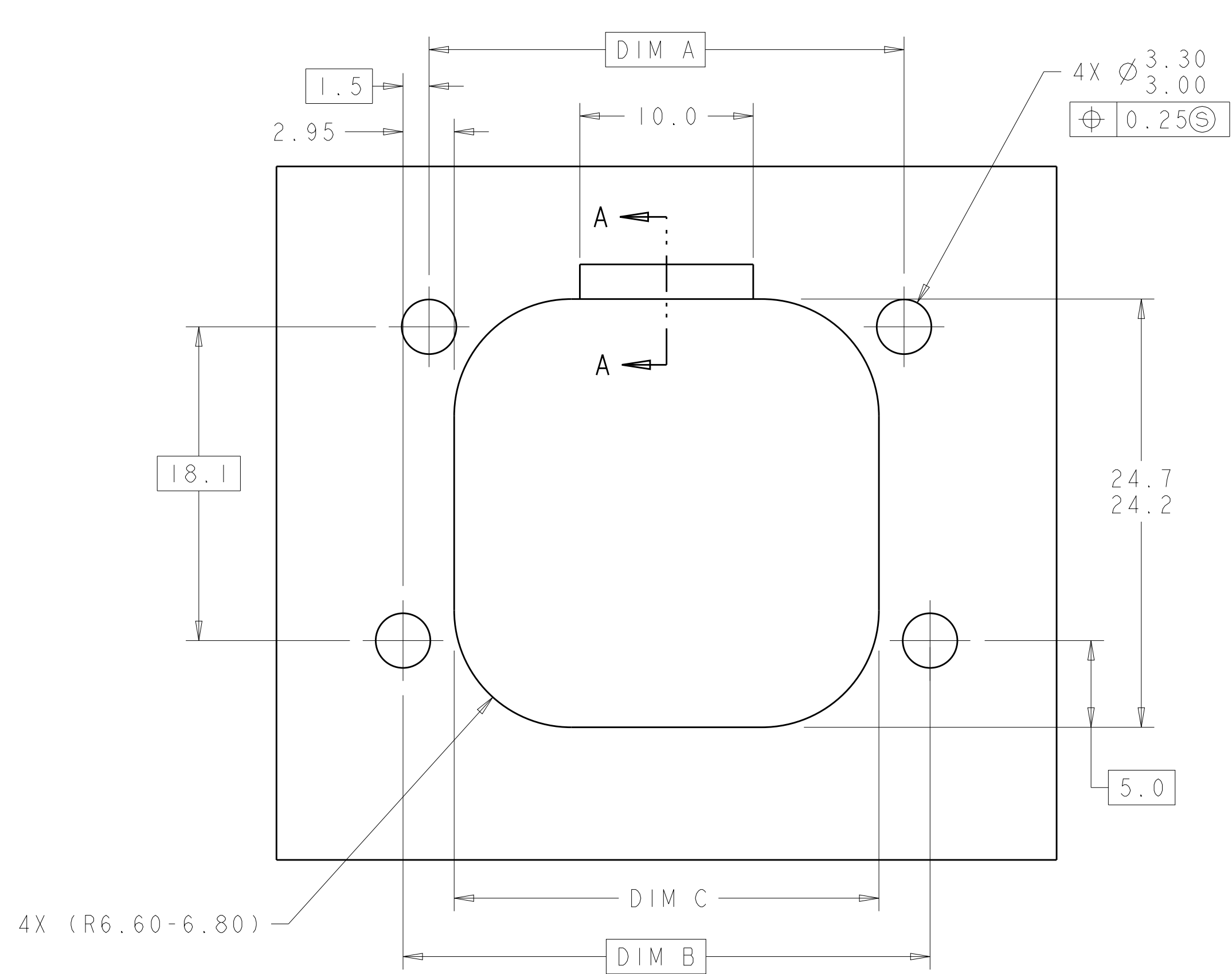
- Overall width: (40.8)
- Overall height: (34.1)
- Inner width: (27.4)
- Inner height: (23.6)
- Radius of outer corners: (R5.0)
- Distance from top edge to first hole center: (18.1)
- Distance from bottom edge to first hole center: (23.6)
- Distance between hole centers (horizontal): (23.4)
- Distance between hole centers (vertical): (4.0)
- Labels for hole positions: 1, 2, 3, 4, 5, 6, 7, 8
- Label for mounting holes: 4X (Ø2.71)
- Label for gasket: GASKET
- Label for typical dimensions: 2.0 TYP, 4.0 TYP
- Section line B-B



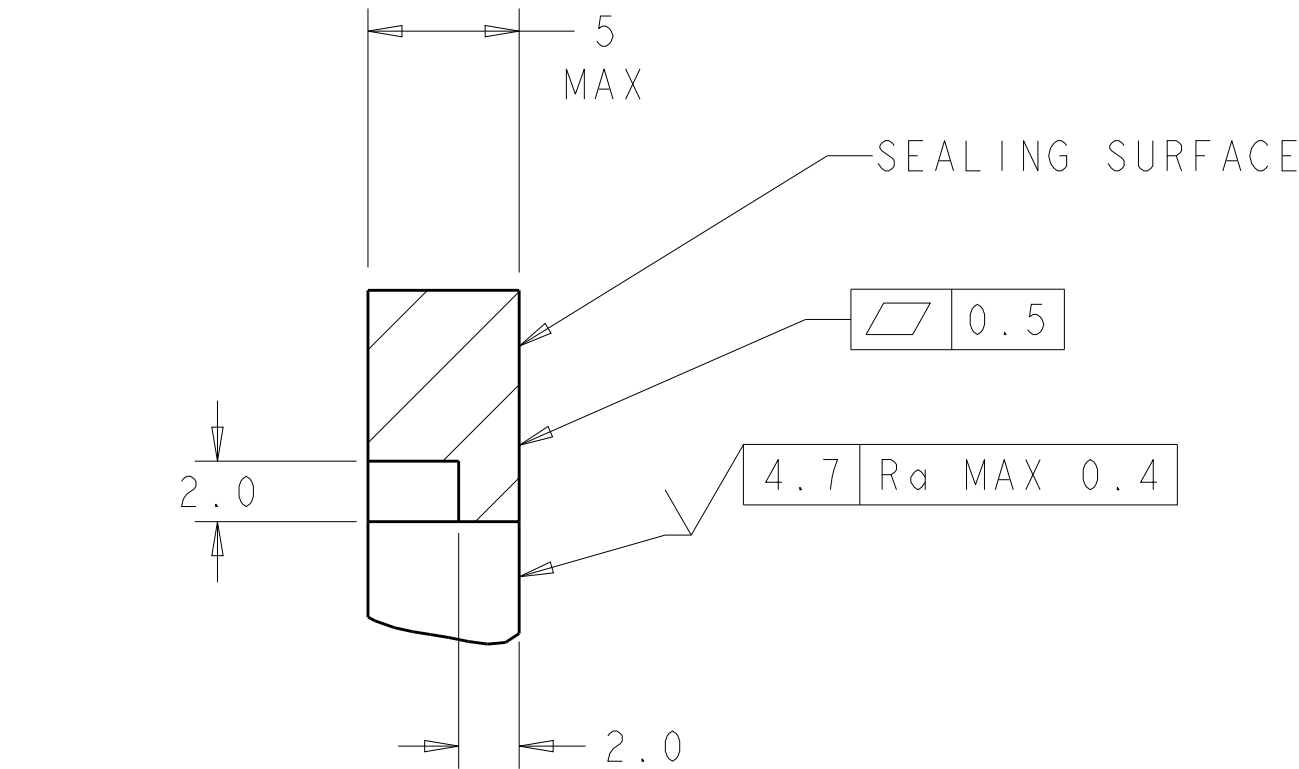
BLACK	TIN PLATED	776280-6
 HEADER HOUSING COLOR	PIN	PART NUMBER

4805 (3/13)

REVISIONS					
P.	LTR.	DESCRIPTION	DATE	DWN.	APVD.
-	-	SEE SHEET 1	-	-	-

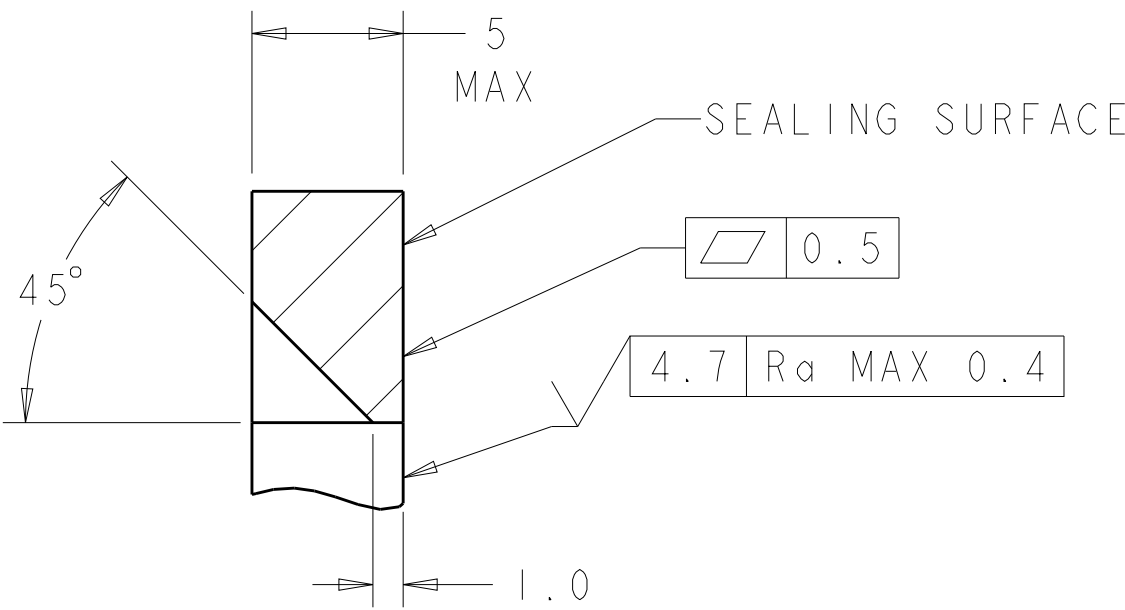


RECOMMENDED MOUNTING HOLE LAYOUT
FOR 5.0 MAX THICK PANEL



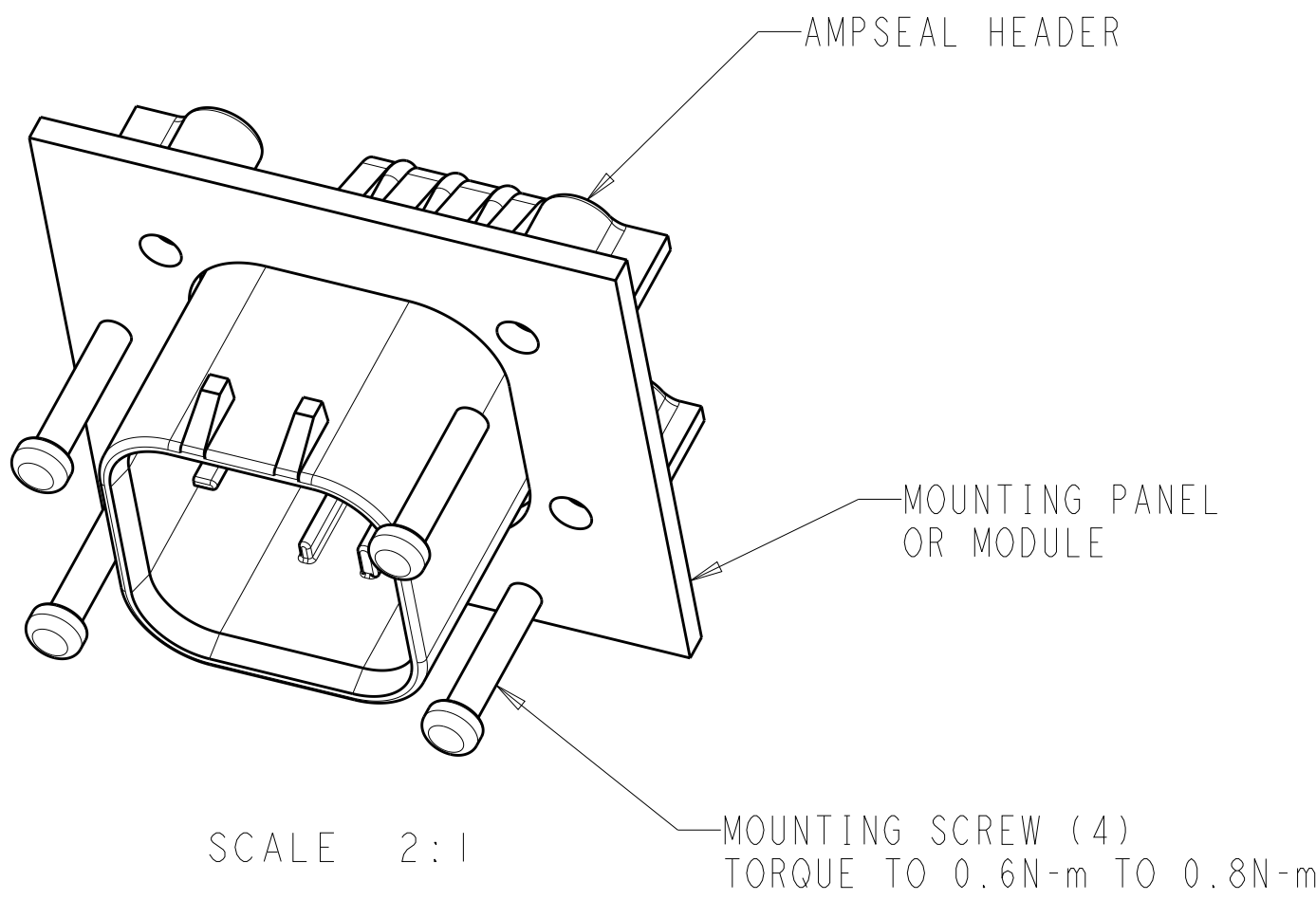
SECTION A-A
OPTIONAL CONSTRUCTION IF PANEL
THICKNESS IS GREATER THEN 2.0

SCALE 4:1

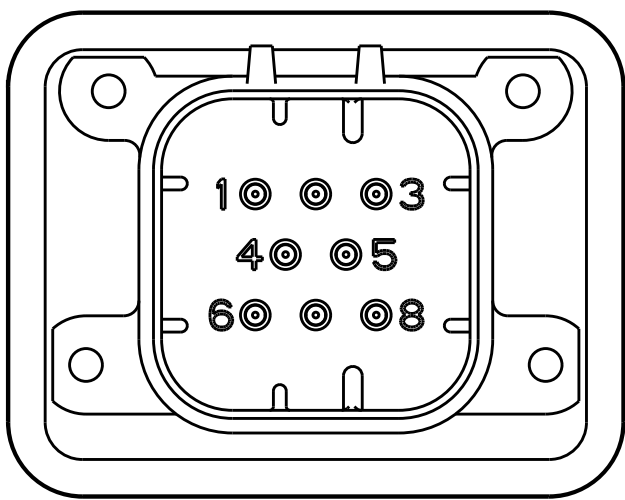


SECTION A-A
OPTIONAL CONSTRUCTION IF PANEL
THICKNESS IS GREATER THEN 2.0

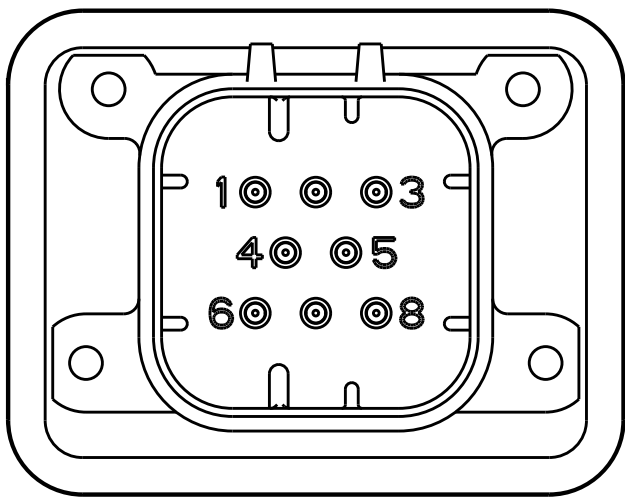
SCALE 4:1



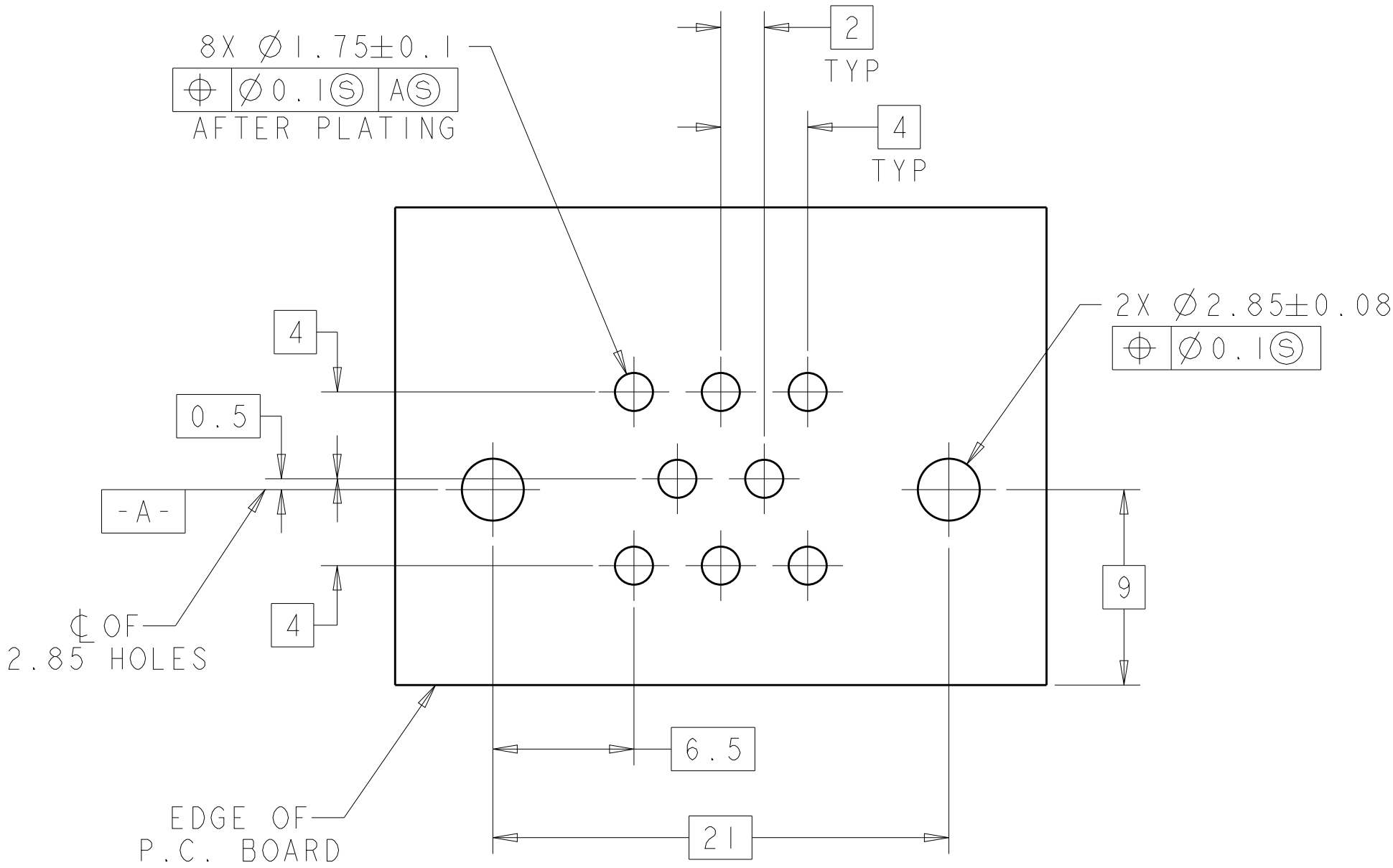
SCALE 2:1
ENSURE THE HEADER IS FLUSH
TO THE PANEL FACE ALL AROUND
BEFORE TIGHTENING TO FINAL TORQUE



776280-1, 776280-6 & 1-776280-1
KEY LOCATION
SCALE 2:1



776280-2 & 1-776280-2
KEY LOCATION
SCALE 2:1



RECOMMENDED P.C. BOARD LAYOUT
FOR 1.57 THICK P.C. BOARD

THIS DRAWING IS A CONTROLLED DOCUMENT.		DWN J. MARKEY 29FEB08	TE Connectivity	
DIMENSIONS:		CHK J. MARKEY 29FEB08		
mm	TOLERANCES UNLESS OTHERWISE SPECIFIED:	APVD J. MARKEY 29FEB08	NAME	
	0 PLC ±.2	PRODUCT SPEC	HEADER ASSEMBLY, 8 POSITION, RIGHT ANGLE, AMPSEAL	
	1 PLC ±0.13	108-1329		
	2 PLC ±.1	APPLICATION SPEC	SIZE CAGE CODE DRAWING NO	
	3 PLC ±.1	114-16016		
MATERIAL	FINISH	WEIGHT	A100779C=776280	
CUSTOMER DRAWING		SCALE 4:1	SHEET 3 OF 3	REV F8